



## *Current Inventory*

(806) 828-6039, phone  
sscues@ectsi.net, e-mail  
www.sscues.com, website



Ebony Cues (listed from top to bottom):

- 6 point high 3 low, ebony into birdseye; red veneers; ivory rectangles; ringwork; leather wrap (SOLD)
- 4 point ebony into ebony with white/black/white veneers; ebony diamonds; ringwork and butt; leather wrap
- 6 point ebony into birdseye; ebony/ivory inlays, ringwork, leather wrap
- Ebony full splice with veneers; ringwork and ivory inlays in butt; leather wrap
- SSZAM cue: 3 high, 3 low ebony; red/black/red veneers; ebony dots on short points; ebony/ivory diamonds on long points; ivory diamonds/dots on ebony butt; leather wrap
- 6 point amboyna into ebony; 3 high 3 low; ebony butt; hoppe ring; leather wrap



Full-Splice Cues (listed from top to bottom):

- 4 point bacote into ebony; rd/blk/rd/blk veneers; ivory joint, 3/8 10 pin, white phenolic collar on shaft with ivory ferrule (cue currently has one shaft, can build second)
- Paul's Personal Cue – 4 point ebony into birdseye; yellow/magenta/purple/blk veneers; ivory hoppe ring / ivory lightning bolt
- 4 point ebony into birdseye; wh/rd/blue/blk veneers; ivory diamond/dots and starbursts in butt; double 12-slot ringwork. Ivorene butt; 2 shafts, ivory ferrules



Newly Available Cues (listed from left to right):

- 6 point, 3 high/3 low, curly into cocobolo; cocobolo butt sleeve with 16 ivory diamond inlays
- 4 point, cocobolo recut ebony veneer into birdseye; ss joint, radial pin, cocobolo butt sleeve
- 6 point, 3 high/3 low, curly into ebony; single red veneer; ebony butt sleeve with rectangle and hourglass inlays; piloted ss joint 5/16 14
- 6 point, 3 high/3 low ebony into curly; 3 large 3 small double ivory diamonds in ebony butt sleeve; ss piloted joint 5/16 14
- 4 point cocobolo into birdseye; 4 ivory spears in points; cocobolo butt sleeve with 4 long hourglass inlays
- 4 point ebony into birdseye; ebony butt sleeve with 8 MOP slotted diamonds; 4 MOP dots between diamonds
- 4 ebony points into ebony, red/white/red veneers; ebony butt with 4 ivory barbells; 12 slot stitch ivory ringwork above and below; ivory butt cap; ss piloted joint 5/16 14
- Full splice bacote into ebony with black/red/black/red veneers; 4 ivory windowed diamonds with ebony on butt; ivory joint; 3/8 10 pin
- 4 point ebony into birdseye with white/green/orange/black veneers and small ivory spears in points; ebony butt sleeve with double 8-slot ivory ringwork above and below, 4 cornered ivory windows with 4 ivory dots; ivory joint; 3/8 10 pin; ivory butt cap

- Full splice 4 point ebony into birdseye with white/blue/red/black veneers; ebony butt sleeve with 12 slot SouthWest style ringwork above and below reversed ivory points and starbursts with ivory dots; ss joint 5/16 14
- Paul's Personal Cue (*proving that any cue is for sale at the right price!*) – 4 point ebony into birdseye; yellow/magenta/purple/blk veneers; ivory hoppe ring/ivory lightning bolt; ss joint; radial pin



Tournament Display Cues:

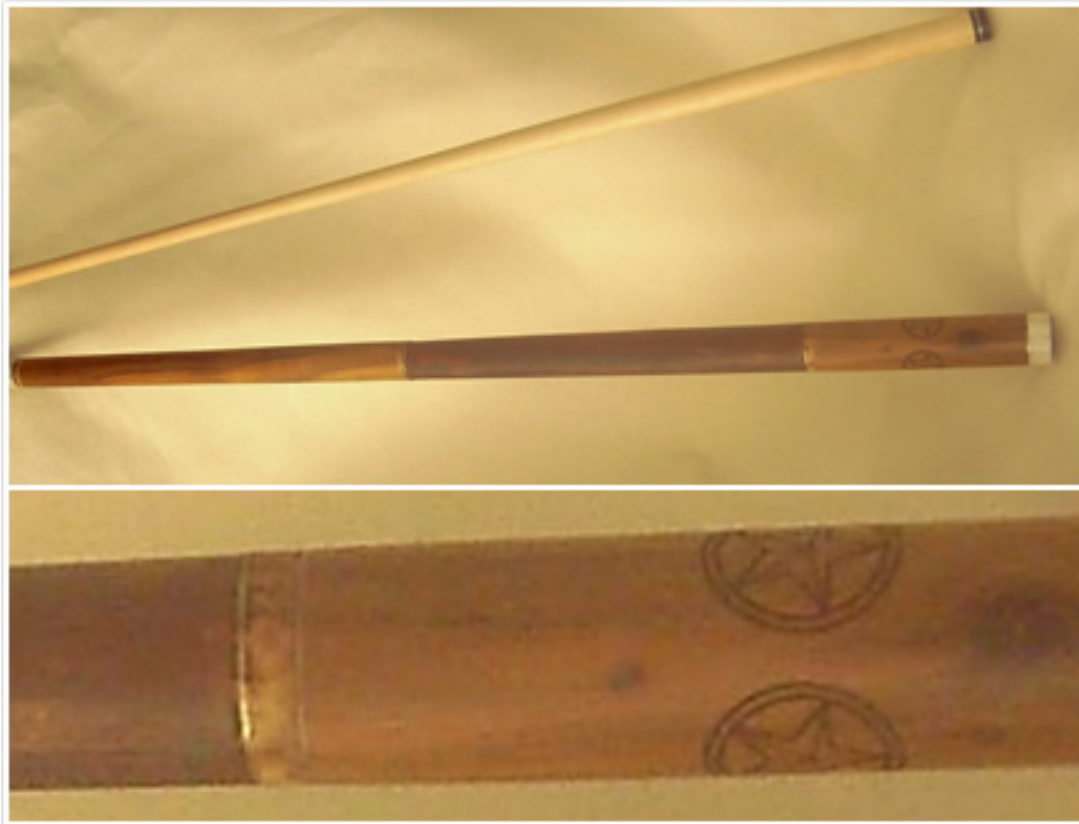
- This wide variety of hand-built cues are on display and for sale at Fast Eddie's Tour events statewide. Please see the link below for event dates and locations.
- [www.azbilliards.com/2000showschedule.cfm?tournum=23](http://www.azbilliards.com/2000showschedule.cfm?tournum=23)





Sample of Piloted Ivory Joint:

- 4 point East Indian rosewood into curly maple with veneers. This photo is of a cue currently owned by a top Texas road player.



The Texas cue

**S & S Cues**

(806) 828-6039, phone

[sscues@ecsti.net](mailto:sscues@ecsti.net), e-mail

[www.sscues.com](http://www.sscues.com), website